



榮 炭

Long Time Tech. Co., Ltd.

# Anode Materials for Li-ion Battery

**Product : Natural Graphite**

**Product Name : LT-N98**

**Version : IA**

Headquarters <http://www.lttech.com.tw>

◇ Long Time Technology.Co.Ltd

TEL: +886-2-26903311

6F.,No.237, Sec 1, Datong Rd.,Xizhi Dist.,New

FAX: +886-2-26903322

Taipei City 22161,Taiwan (R.O.C.)

Manufacture Factory

◇ Long Time Electronic Materials.Co.Ltd

TEL: +86-750-6438198

Guangdong Jiangmen Xinhui Yamen Fixed-point

FAX: +86-750-6438199

Electroplating Industrial Base

◇ Shanggao Long Time.Co.Ltd

TEL: +86-0795-2505555

Jiangxi Yichun Shanggao Industrial Park

FAX: +86-0795-2505569

# LT-N98 Natural Graphite

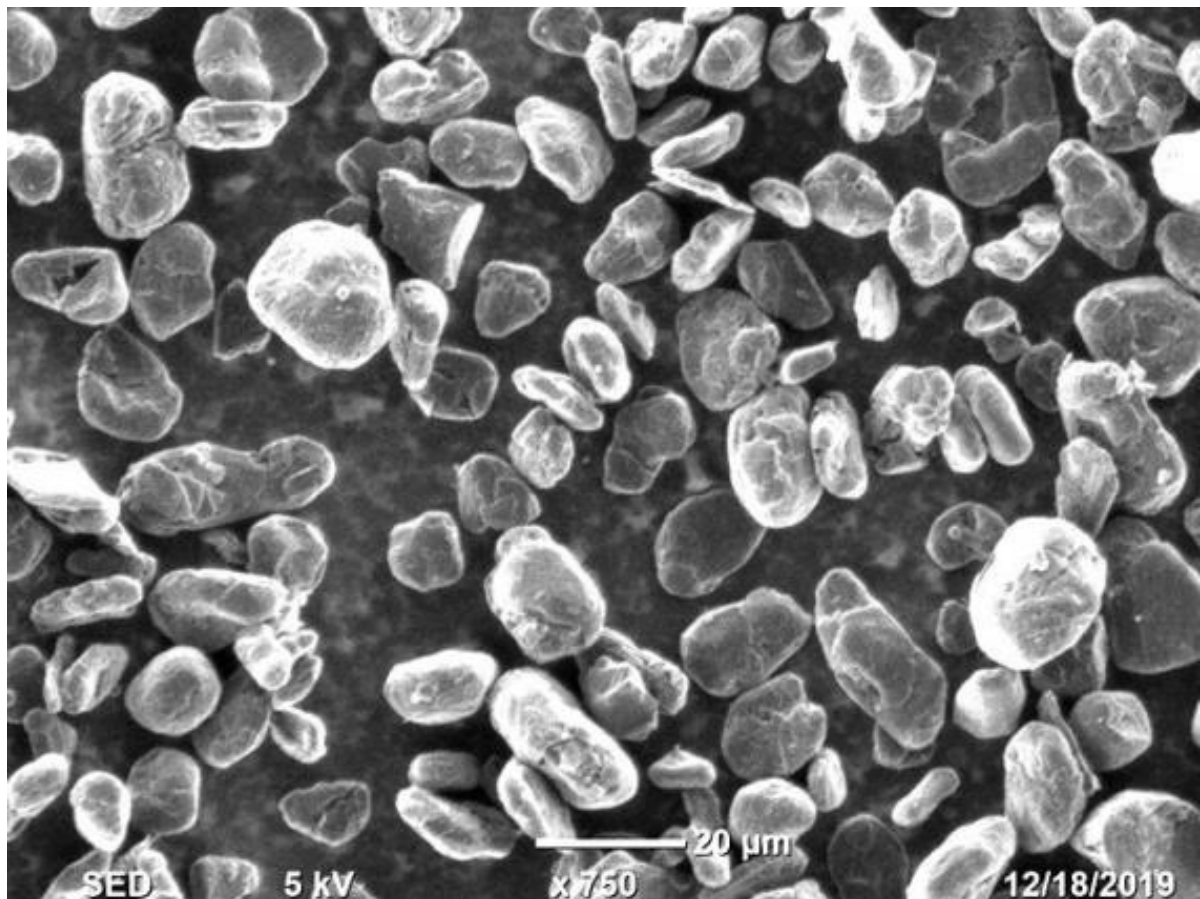
## Specification

Item		Unit	Specification	Method
Particle Size	D <sub>10</sub>	μm	6 - 9	<b>GB/T 24533-2009</b> App. A (0.2 ml 10% NP-40 solution was used to improve dispersion of graphite in water.)
	D <sub>50</sub>		13 - 16	
	D <sub>90</sub>		20 - 27	
Tap density		g/cm <sup>3</sup>	≥ 0.95	<b>GB/T 24533-2009</b> App. M
Specific surface area		m <sup>2</sup> /g	≤ 4.5	<b>GB/T 24533-2009</b> App. D
Moisture content		%	≤ 0.20	<b>GB/T 3521-2008</b>
Ash content		%	≤ 0.05	<b>GB/T 3521-2008</b>
Fixed carbon content		%	≥ 99.95	<b>GB/T 3521-2008</b>
True density		g/cm <sup>3</sup>	≥ 2.20	<b>GB/T 24533-2009</b> App. E
1 <sup>st</sup> Discharge cap.		mAh/g	≥ 360	Half cell test (CR2032) in the range of <b>0.001 – 2 V at 0.1 C</b>
1 <sup>st</sup> Coulombic eff.		%	≥ 92	

# LT-N98 Natural Graphite

## Features

- Spherical-like particles
- Easy preparation of electrode
- Stable cyclic performance
- Good battery safety
- High discharge capacity
- Applied in:  
High energy square, cylindrical and pouch battery

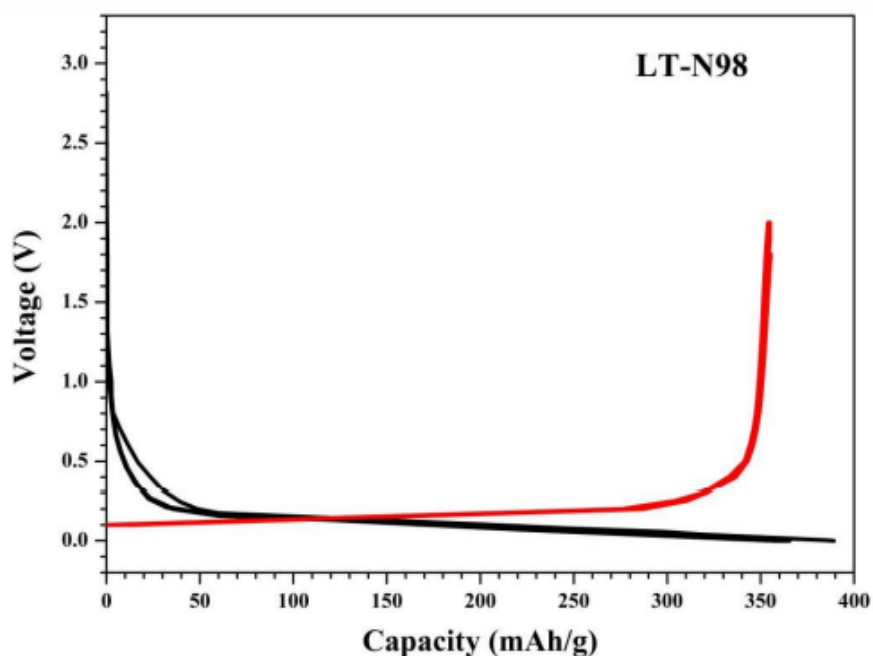


LT-N98 Natural Graphite (SEM)

# LT-N98 Natural Graphite

## Half cell test (CR2032)

Item							Remark
Components	1	Work electrode	Powder	Name	Chemicals	Ratio	—
				Active material	LT-N98	93.3%	—
				Conductive agent	Super P	3.0%	Timcal Super P
				Binder	CMC	1.2%	DKS CELLOGEN 3H
	SBR	2.5%	NIPPON A&L SBR SN-307R (S/C=50%)				
				Solvent	H <sub>2</sub> O		—
2	Counter electrode	Metallic lithium				—	
3	Electrolyte	1 M LiPF <sub>6</sub> in EC: DMC: EMC(1:1:1 vol.%) with 1wt.% VC.				—	
Testing	The specific capacities measured in the voltage range of 0.001 - 2 V vs. Li/Li <sup>+</sup> at 0.1 C.					—	



Charge-Discharge Curves

# LT-N98 Natural Graphite

## Suggest preparation method of electrode for full cell

Item					Dose or Range	Unit	Remark	
0	Plan	Total weight of powder			2,000	g	—	
		Solid content of slurry (S/C)			43.96	%	—	
1	Materials	Powder	Name	Chemicals	Ratio	—	—	
			Active material	LT-N98	95.0%	1900	g	—
			Conductive agent	Super P	1.0%	20	g	Timcal Super P
			Binder	CMC	1.5%	30	g	DKS CELLOGEN 3H
		SBR		2.5%	100	g	NIPPON A&L SBR SN-307R (S/C=50%)	
Solvent	H <sub>2</sub> O		2500	g	—			
2	Slurry viscosity				1,000 - 3,000	cps	—	
3	Coated surface density			Single layer	48	g/m <sup>2</sup>	—	
				Double layer	96	g/m <sup>2</sup>		

## Methods

1. Measure **2200g** of distilled water in a container.
2. Add **30 g** of CMC, rotate 10 Hz, revolution 15 Hz, 10 min.
3. Stir quickly and rotate 35 Hz, revolution 30 Hz, 90 min (Degree of Vacuum-0.09 mPa, Turn off recirculating water).
4. Add **20 g** of Super P, rotate 10 Hz, revolution 15 Hz, 10 min.
5. Stir quickly and rotate 35 Hz, revolution 30 Hz, 120 min (Degree of Vacuum-0.09 mPa, Turn off recycling water).
6. To understand the degree of dispersion of granule, fineness of the electric conductive slurry is tested. (Keep stirring for 30 mins more if it is not fine enough).
7. Add **950 g** of LT-N98, rotate 10 Hz, revolution 15 Hz, 10 min.
8. Add **950 g** of LT-N98 again, rotate 10 Hz, revolution 15 Hz, 10 min.

# LT-N98 Natural Graphite

9. Stir quickly and rotate 35 Hz, revolution 30 Hz, 120 min (Degree of Vacuum-0.09 mPa, Turn on recirculating water, keep the slurry under temperature of 25 - 28 °C).
10. To understand the degree of dispersion of granule, fineness of the electric conductive slurry is tested. (Keep stirring for 30 mins more if it is not fine enough).
11. Add **100 g** of SBR adhesive, add **300 g** of distilled water and stir quickly, rotate 35 Hz, revolution 35 Hz, 60 min. (Degree of Vacuum-0.09 mPa, Turn on recirculating water, keep the slurry under temperature of 25 - 28 °C).
12. To make sure the slurry fulfilled the condition of coating, Sieved the electrode slurry (**120 mesh**), and level of degree of fineness and viscosity is measured.

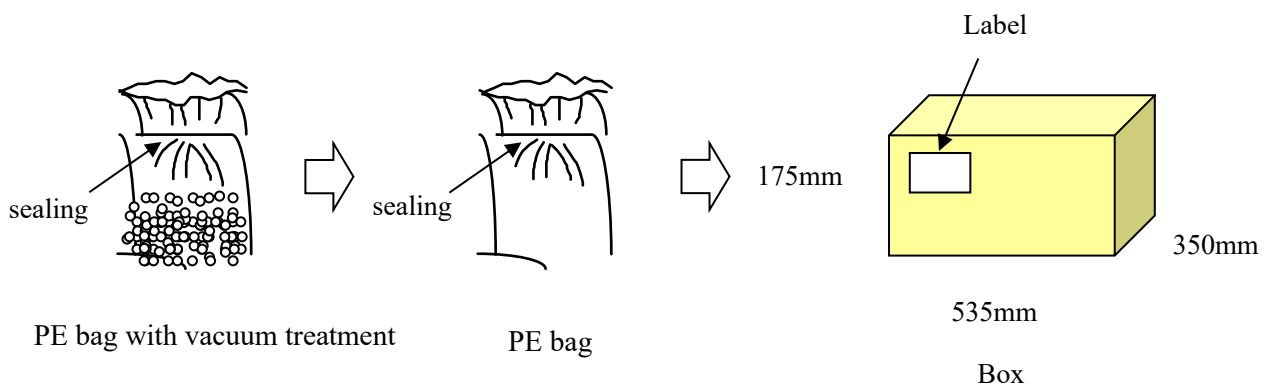
※ Mix the powder and solution under low speed to ensure the solution moisten the powder, to prevent the agglomeration.

※ The procedure may vary from different device condition.

# LT-N98 Natural Graphite

## Packing

1. **Specifying:** 25 Kg/Box
2. **1<sup>st</sup> packing:** PE bag with vacuum treatment
3. **2<sup>nd</sup> packing:** PE bag
4. **3<sup>rd</sup> packing:** Paper box packing with label (including: Name, Lot No., MFD)



## Storage Condition

- 1 Suggest storage temperature and humidity controlled below 40°C and 60%RH respectively, for brand new; After opening, please use it up as soon as possible.
- 2 After opening for 1 hour, it is a natural phenomenon for moisture regain, implying that moisture content of powder could be increased to 3000 ppm. Suggest drying it again before use.